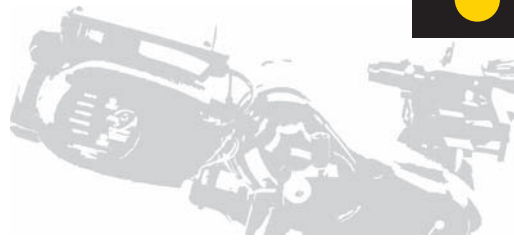


Perfect Brake Job. Every time.

MODELS: • PFM 9.2

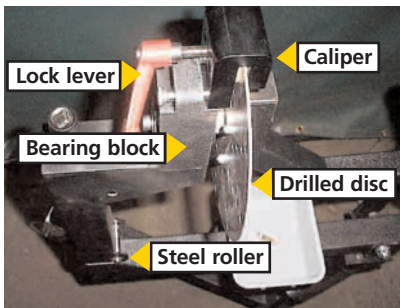


● 50-390 ADJUSTABLE DISC-LOCK TROLLEY

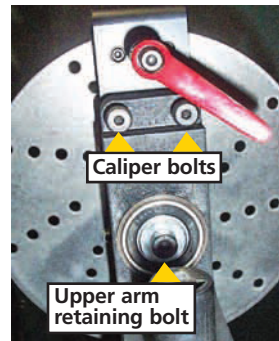


Pro-Cut is proud to announce the launch of the new 50-390 R1 Adjustable “Disc-Lock” Trolley. This trolley will replace the 50-350 effective immediately in PFM 9.2SL packages in the U.S. market.

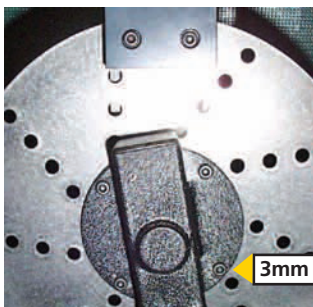
The trolley incorporates the existing base from the previous 50-350 and adds a new L arm and upper trolley arm combination that uses a drilled disc, caliper, and pads actuated by a small hand-operated lever. Besides offering drastically improved anti-rotation characteristics, the new through post of the upper trolley arm rides in two sealed bearings. The combination of the bearings and the disc-lock system increases the usability of the trolley greatly and improves operator feel and confidence. Improvements have also been made in the vertical height adjustment “power screw” design and a steel roller has been added to the forward section of the vertical outer tube to help smoothly bear the increased weight of the PFM 9.2SL. The separate parts will NOT be available at this time to upgrade existing 50-350 trolleys, but expect to see them in the near future.



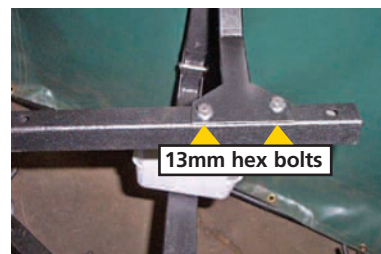
◀ Aerial view of the new 50-390 trolley shows the key components.



◀ View from the operator's side reveals there are 2 caliper bolts requiring the use of a 4mm Allen to secure. They are also knurled, so for demo purposes they can be finger-tightened for ease of assembly. The upper trolley arm post through the 2 bearings is secured with 1- 6mm Allen bolt that is also knurled for easy assembly during demo service.



◀ The lathe side of the trolley reveals the 4- 3mm Allen bolts that secure the disc to the upper trolley arm. These bolts screw into 4- 7mm nylon locking hex nuts.



◀ Note that the bolts that secure the cross piece to the upper trolley arm are now a 13mm hex style vs. the old 6mm Allen.

For assembly instructions please visit: www.procutusa.com/pdf/trolley_diagrams_50380_50390.pdf.

Special note: 50-350 trolley assembly and spare parts for 50-350 trolley will continue to be available through the end of 2007 but will no longer come with the PFM 9.2SL packages.